

KeyedIn Enterprise February 2022 v7.4.2 Update Release

Release Summary

Version 7.4.2

16th February 2022

Contents

Document Management	2
Version Control	2
Document Approval.....	2
Document Authorization	2
Overview of Changes.....	2
Release Summary.....	3
New Scheduled Job to check-in Task Plans that have been checked out over 24 hours.....	3
Task Plan Gantt - Highlight the Current Date's Task on Open.....	5
View Role / Resource on Forecast Demand Collaboration Posts.....	6
Data View Changes	7

Document Management

Version Control

Version Number	Date	Revision Description/Summary of Change	Section Number	Prepared By	Next Review Date
1.0	07/02/2022	ALL	ALL	R Thompson	

Document Approval

Version Number	Approval Date	Approved By (Name/Title)
1.0	09/02/2022	Matthew Muldoon – Chief Product Officer

Document Authorization

1.0	09/02/2022	Paul Gleghorn – SVP, Technology and Architecture
-----	------------	--

Overview of Changes

	Fixes	Enhancement
Web Application	✓	✓
Mobile Application	x	x
Mobile Services	x	x
V3 API	x	x
V7 Core API	x	x
V7 Data API	x	x
Data Views	✓	✓

Release Summary

KeyedIn Enterprise v7.4.2 is a scheduled maintenance update release with general support fixes and feature enhancements relating to Task Planning and Forecast Collaboration Posts:

- A new scheduled job to automatically check-in Project Task Plans if they have been checked out for over 24 hours.
- When opening a Project Task Plan, the earliest Task scheduled on the current date is automatically located and highlighted by default.
- Collaboration Posts relating to Forecasts now also provide reference to the Demand line's Role or Resource.

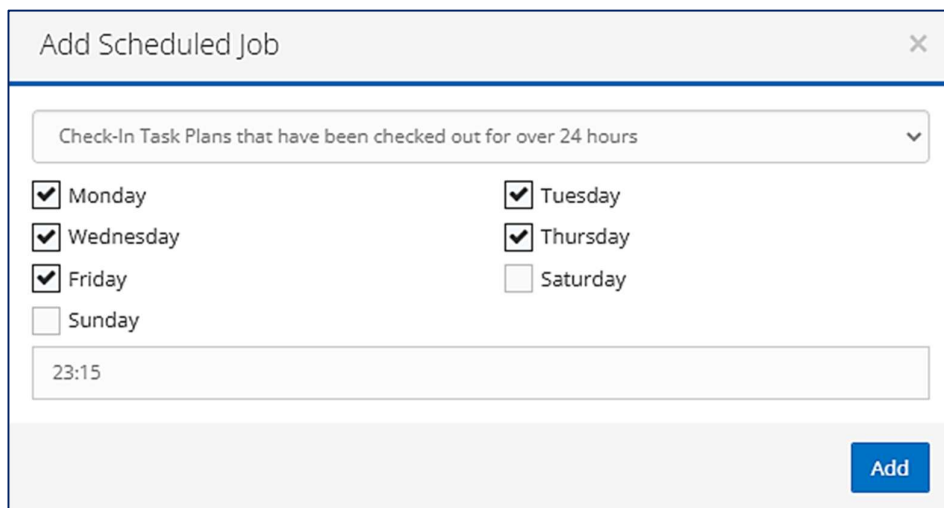
Customers will be notified separately via our internal Support process (Freshdesk) for any of their tickets that have now been resolved in this Release.

New Scheduled Job to check-in Task Plans that have been checked out over 24 hours

A new scheduled job is available in **Configuration > Scheduled Jobs** to allow system administrators to automatically check-in all Project Task Plans that have been checked out for over 24 hours. This applies to both Published and Draft plans.

For Projects where multiple users are required to check-out and work on the same plan, this helps eliminates the uncertainty where the previous user may not have remembered to check the plan back in.

The job, named **Check-In Task Plans that have been checked out for over 24 hours** can be scheduled for selected days of the week at an appropriate time.



Please be aware that all dates and times in Keyedin are based on the server time for your region (UK, USA, AUS). Therefore the time of the scheduled job and the last check-out time of the Task plan are relative and consistent for all users across your organisation.

Alternatively, the job can be run instantaneously using the **Run Now** option

Scheduled Jobs
✕

Job	Runs On	Runs At	Last Run Time	Outcome	
Check-In Task Plans that have been checked out for over 24 hours	Mon, Tue, Wed, Thu, Fri	23:15			<input type="checkbox"/>

+ Add
✕ Delete

Run Now

Check-In Task Plans that have been checked out for over 24 hours
▼ Run Now

🕒 Scheduler Date / Time: 02/07/2022 08:57:38

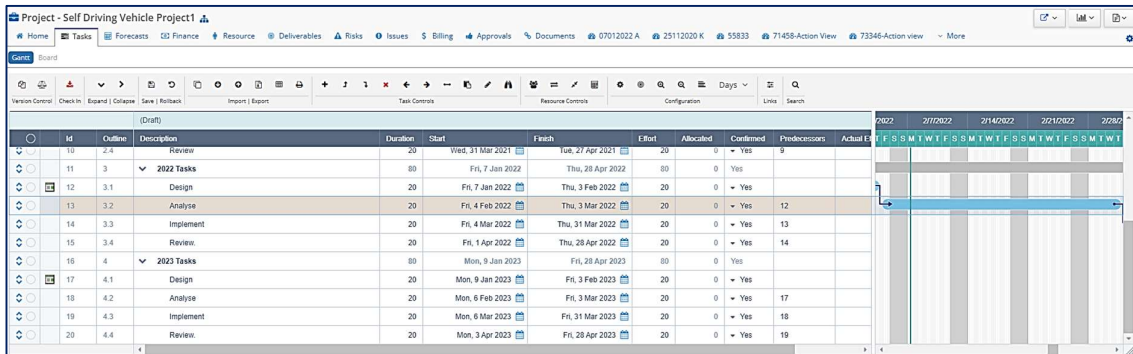
🔄 Refresh
Close

Important: if any users are working on the Task Plan at the time the scheduled job is run then any unsaved changes will be lost. Therefore please consider scheduling the job outside of standard business hours to minimise risk, and communicate any process changes with users where appropriate.

Any Task Plans that have been checked out for less than 24 hours will not be affected by the scheduled job.

Task Plan Gantt - Highlight the Current Date's Task on Open

The enhanced Task Planning Gantt now automatically locates and highlights the earliest Task scheduled on the current date when the plan is loaded.



The highlighting applies to the earliest visible Task where any of its scheduled dates coincide with the current date. Where a Task is matched, the Gantt panel will scroll to the current date, also visually indicated by the recently introduced Today line.

The new behaviour for landing on a Task with the current date only applies when initially loading the Task plan or selecting a different plan version. Note, it does not apply to Summary Tasks, or Tasks hidden in a collapsed Summary Task.

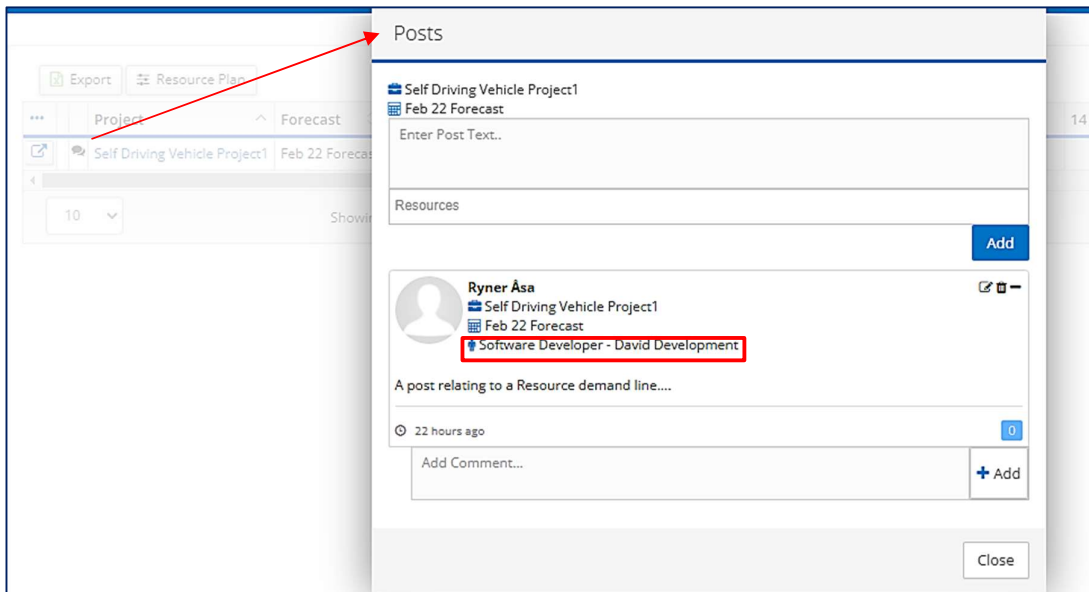
The existing behaviour where the focus remains on the last selected Task following a Save, or Check-Out operation continues to apply.

View Role / Resource on Forecast Demand Collaboration Posts

For clients using Forecast Demand Collaboration Posts, an additional reference to the Demand line's Role (or Role and Resource) is now displayed when viewing the Post outside of the Forecast (such as on the on Requests Screen or Collaboration widget) to make it easier to locate Demand line being referenced.

The Resource/Role reference is linked directly to the Forecast Demand line and will be automatically updated if further changes to the Role or Resource are made on the Forecast.

Example: Viewing the Forecast Demand post on the Request screen:



Data View Changes

The following data view changes have been made for this release:

Data View	New Fields
Forecast Demand General v6.0.13	Added Interested Resources
Planning General v6.0.18	Added Project Plan Control Fields
Forecast Weekly v6.0.3	N/A – Reissued data view to correct duplicate data over split periods in the previous version v6.0.2. Certain fields have been removed; please consult with Support to assess impact if upgrading from v6.0.2.

Data view changes are optional. Please contact Support for installation guidance as required.